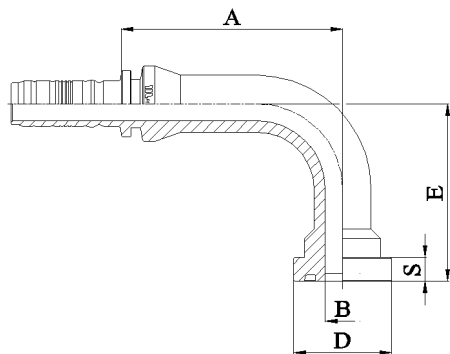


ORIGINAL EQUIPMENT CONNECTIONS

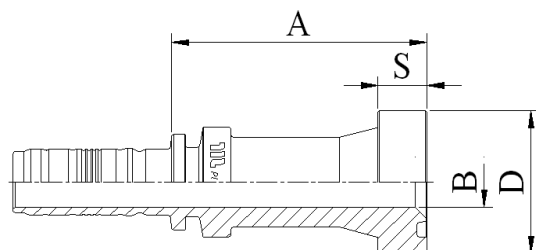


M83791

**90° FLANGE PLUS
(SAE J518 -2/ ISO 6162-2
PORT COMPATIBLE)**

PART. REF.	HOSE BORE			Flange		DIMENSIONS mm						
	DN	Dash	inch			inch	B	A	D	E	S	
M83791-12-12	19	- 12	3/4"	3/4"		14.5	93.5	41.4	75.0	10.0		
M83791-16-16	25	- 16	1"	1"		19.5	91.0	47.7	90.0	11.0		
M83791-20-20	31	- 20	1.1/4"	1.1/4"		25.0	115.0	54.2	110.0	12.0		

ORIGINAL EQUIPMENT CONNECTIONS



M83911

STRAIGHT SUPERCAT SERIES FLANGE

PART. REF.	HOSE BORE			Flange		DIMENSIONS mm					
	DN	Dash	inch			inch	B	A	D	S	
M83911-12-12	19	- 12	3/4"	3/4"		14.5	75.0	41.5	14.3		
M83911-12-16	19	- 12	3/4"	1"		19.5	80.5	47.7	14.3		
M83911-16-16	25	- 16	1"	1"		19.5	80.0	47.7	14.3		
M83911-16-20	25	- 16	1"	1.1/4"		26.0	84.0	54.0	14.3		
M83911-20-20	31	- 20	1.1/4"	1.1/4"		26.0	80.5	54.0	14.3		
M83911-20-24	31	- 20	1.1/4"	1.1/2"		32.0	84.0	63.6	14.3		
M83911-24-24	38	- 24	1.1/2"	1.1/2"		32.0	84.5	63.6	14.3		
M83911-24-32	38	- 24	1.1/2"	2"		42.0	107.5	79.3	14.3		
M83911-32-24	51	- 32	2"	1.1/2"		32.0	95.5	63.6	14.3		
M83911-32-32	51	- 32	2"	2"		42.0	110.5	79.3	14.3		